



IDSCLS FOCUS

November 2003

An Idaho Society for Clinical Laboratory Science Publication



ASCLS Member of the Year 2003 Awarded to Debbie Shell

Congratulations to Debbie Shell on achieving the ASCLS Member of the year award. Debbie's letter of recommendation is included in this issue... Just incase you don't already know what a fantastic person she really is.

.....

The Idaho Society for Clinical Laboratory Scientists would like to nominate Debbie Shell for the ASCLS Member of the Year. Debbie has been an active member of ASCLS since 1978. Debbie's contributions to the Society have already been listed in her nomination form so I would like to focus on what Debbie has meant to the organization. At the state level, she has held every office possible. She is an excellent resource for new officers because she has done everything. Over the last year we have worked on creating job descriptions and Debbie's input on each one was invaluable. Debbie has also held several offices at the Regional level and has helped mentor new leaders in their positions.

The most impressive thing about Debbie's long tenure with ASCLS is her level of activity. Debbie has been consistently involved the whole time. No matter what was going on in her personal or professional life Debbie has maintained an active presence in the organization. The hospital that she works at has currently undergone a merger with a lot of reorganization. Debbie has still been available to attend meetings, work as Co-General Chair of IMSS, and help out where needed in the midst of all the turmoil. Debbie always has time for ASCLS. The degree to which Debbie has been involved also shows at any ASCLS gathering. Debbie knows everyone. You can't walk around the convention center with out Debbie knowing almost everyone. It is a wonderful thing to see when you are from a small state but you have prominent members.

Debbie's role in IDSLCS has been very important. She has helped me with ideas to keep things running smoothly for my tenure as President and she has been particularly helpful in mentoring my Membership Chair, who is involved for the first time in committee work. I have been so grateful to have Debbie, she has made my leadership role easier and has worked closely with the other Presidents before me. I really appreciate being able to count on her help and support whenever I need it.

There is one other side of Debbie that needs to be mentioned. She is an excellent representative of our profession outside of the ASCLS organization. Debbie has been actively involved in recruitment of new Clinical Laboratory Scientists. She has helped in efforts to start up a school in the region; she has recruited at career fairs, and is always willing to talk to students. She reaches out to the community and promotes her profession in the hospital by being actively involved in committees.

Debbie Shell is a well-known name in IDSLCS and ASCLS. She has been an invaluable resource, dependable, and always willing to listen and help out. IDSLCS feels that Debbie's contributions on the state, regional, and national level make her more than deserving of the honor of the Member of the Year Award. We hope that you will recognize her for her achievements as we have.



IDSCS President's Message

Happy Thanksgiving everyone!! IDSCS is looking ahead to a productive year. I know when I started out as an IDSCS member back in 1996 the first question I had was what will being a member of this organization do for me? I would like to try and answer that now.

I spent a week this summer in Philadelphia taking classes and learning how to be an effective leader, as did our past-president Stephanie Combs, and our president-elect Holly Weinberg. It wasn't until I went to my first national convention two years ago in Chicago that I realized how much the organization does to look out for the interest of the practicing medical technologist. I was amazed to find out how closely the organization works with congress and other organizations to make sure that our voice is heard. I don't know if that really gets communicated to our membership who can't attend the national meetings.

One thing I can tell you from personal experience is that your membership says something to potential employers in the area. It says that you are interested in the profession and that you are interested in your continuing education as a practicing medical technologist.

Being a member also affords you networking opportunities. Why is this important? If you work for a doctor's office lab you know how isolated you can become, but its also nice if you work at a hospital to know who works in the state alongside you. It's really nice to know whom you are calling when you ask for blood to be shipped or ask to borrow reagents, or if you just have a simple question you want to bounce off of another Med Tech. We are going to make this even simpler. We have begun the first steps in implementing the Scientific Assembly online program statewide. For those of you involved in the hematology or microbiology scientific Assembly you know what a great information and networking source this is. We would like to offer this same type of service at a statewide level. Hopefully we will have this up and running by the end of the year. If you haven't given us your email address and your choice of Scientific Assembly (SA), please do so by contacting Barb Frankovich at barbmtascp@msn.com so we have the most accurate information and you can be involved in this great networking opportunity. You may now also update your information at the national level by visiting the ASCLS website at www.ascls.org.

We have a very large student population this year. We would like to actively recruit these students and will concentrate on scholarship opportunities and mentoring of these new members. Hopefully they, as well as the rest of the organization will see what being a member of IDSCS can do for them

ASCLS President Elect Susan Morris



The following are comments made by ASCLS President Elect Susan Morris when asked why membership in ASCLS is important.

Laboratory professionals often say they don't get the recognition and respect they want and deserve. Although 70% of medical decision making is supported by laboratory results, most of the general public and far too many health care workers don't really have a clue about how much education and training we have, or what it is we actually do. Clinical laboratory professionals are the true scientists of health care. If we hope to attract students to our profession, if we want the public to support us in getting state licensure adopted, it is critical that others know more about us. Now, I could be a solitary voice trying to get that message out. Or I could be part of an organization that works to spread that message for the entire profession. Which do you think will be more effective? If we want the world to know and respect our profession, we need to be ASCLS members.

My experiences in ASCLS have increased my self-confidence to stretch and learn new skills, many of which have translated directly into success factors in the workplace.

We could complain about the problems that plague our profession or we could do something to try to make it better. Joining together with like-minded colleagues with shared values, increases our voice to influence and create the vision we share for the future of our profession.

In summary, membership in ASCLS tells the world who we are and what we do. Besides increasing respect for the profession, ASCLS activities create opportunities to learn and practice leadership skills that will better position us for promotional job opportunities that may come up in the future.

Key Contacts

President	Christy Posio	chrizteaze@aol.com
President elect	Holly Weinberg	weinberh@slrmc.org
Past President	Stephanie Combs	glarbors@slrmc.org
Secretary	Sandi Oldenberg	ziakiana@internetoutlet.net
Administrative Secretary	Debbie Shell	debbies@portmed.org
Treasurer	Heather Gunter	Jandh1993@aol.com
Editor	Kent Evensen	cakevens@ihc.com
Editor-elect	Susan Bower	
Board member 2 nd year	Ray Tanner	raytnnr@netscape.net
Board member 1 st year	Sonja Nehr-Kanet	nehksonj@isu.edu
Student Rep	To be filled	
Committee Chairs		
Professional Affairs	Keila Poulsen	kpoulen@aol.com
Leadership Development	Debbie Shell	debbies@portmed.org
Membership Development	Brenda Miranda	bshariki@msn.com
PAC	Mary Lay	mhlboise@cs.com
Nominations & Elections	Mary Lay (chair)	mhlboise@cs.com
Scholarship	Kristine Hodson	femangum@aol.com
Convention 2004	Amy Fullmer	Amylarsenfullmer@peoplepc.com
Awards	Stephanie Combs	glarbors@slrmc.org
Webmaster	Brian Anderson	band1@mindspring.com
Scientific Assembly	Barb Frankovich	barbmtascp@msn.com

Notes from your Editor

One of my goals this year as editor is to utilize the newsletter to help us get to know others in our profession. So I created a new section on our letter called "IDAHO SPOT LIGHT". I'm sure many of you know and work with great professionals that excel at the workplace. Now is your chance to spotlight them. So if you have some one who has gone the extra mile send me an email at cakeves@ihc.com.

Kent



"IDAHO SPOLIGHT"

Kim Mendenhall
of Soda Springs Idaho

Kim works at the Caribou Memorial Hospital in rural Idaho for the past 13 years where she is the Laboratory Manager. Since this is a rural hospital Kim wears many hats and they do a variety of testing... Chemistry, toxicology, Blood gases, Urinalysis, Breath Alcohol and EKG's just to name a few. The variety of the work is the one thing that Kim enjoys. Kim has a great staff, Dawn Farns is the ISU student who just became certified. Tracy Tingy is a RN. Troy Ruhter is the Med tech from Portneuf that works 2 1/2 days on his days off. Frank Swassing covers a few weekends a month. Each of these employees has proven to be a very resourceful member of the team and bring many skills and knowledge to the job.

Kim says she really doesn't have a favorite area in the lab, however there are certain tasks that she is not fond of... like stool leukocytes, sputum cultures, and drug screen collections. Her greatest satisfaction comes from customer service. Kim says, "Nothing brightens up my day more than to hear a patient say, that was the best blood draw I have ever had". Her favorite time of the year is when they hold the annual Health Fair. They do an average of 400 to 450 samples each year. Sometimes that is the only day Kim see some people all year. Her personal phone is busy with patients calling to make sure she will be there to draw their sample. It is a very positive experience for the community and Kim.

Kim says that she was influenced to become a microbiologist when a disease hit her vegetable garden. "I went to the library to learn about contributing factors and my interest grew exponentially from there", says Kim. Her career took an interesting turn when she was introduced to Kathy Speigle and she entered the Medical Technologist program at ISU. Kim started working at Caribou Memorial while she was finishing school. Kim recalls, "My first day blew me away and I was infatuated with the environment from then on."

Some of Kim's outside interests include her husband and family, which she adores, as well as water-skiing and coed softball that she coaches. She loves to play racquetball in the fall as well as volleyball. She says that she despises grocery shopping, and laundry.. it's a waste of time... I rather be off playing.

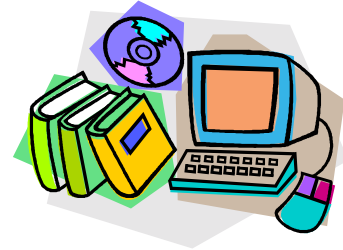
IDSCLS Scientific Assembly

By Anne Moss Williams

The American Society for Clinical Laboratory Science (ASCLS) web page describes the Scientific Assembly (SA) portion of the organization. One of the goals of the IDSCLS leadership is to strengthen the organization by putting more emphasis on the Scientific Assembly and encouraging support on the grassroots level. This article will discuss Scientific Assembly as well as some of the workings of the SA in Idaho.

The SA is made up of individual scientific assemblies for each of the following disciplines in the field of clinical laboratory science:

- a. Laboratory Administration
- b. Biochemistry/Ligand Immunoassay/Urinalysis
- c. Consultant's Forum
- d. Cytotechnology, Histology, Phlebotomy
- e. Education
- f. Hematology/Hemostasis
- g. Immunology/Immunohematology
- h. Inspector/Surveyor's Forum
- i. Microbiology



The purpose of the SA is to draw members from each discipline or specialty together to solve problems, share information, discuss trends, and to learn new methods and technology. The ASCLS Scientific Assembly has established goals by which members may experience professional, scientific and personal growth through participation. These goals apply to our SA organization, as well, and include:

- a. Providing expertise within a technical area of clinical laboratory science or area of special interest,
- b. Providing opportunities for continuing education in the various scientific disciplines or areas of special interest,
- c. Serving as a resource for basic education in the clinical laboratory sciences,
- d. Identifying specific needs for professional and scientific advancement,
- e. Providing input as requested for the development of laboratory standards in the scientific disciplines, the educational and administrative areas, and other areas of special interest,
- f. Establishing a communication system that will effectively coordinate the Scientific Assembly's endeavors, and
- g. Identifying talent for scientific and professional needs.

Scientific Assembly preferences are specified at the time of application for membership. Students and new members of ASCLS may indicate up to two SA Sections in which they would like to participate. These options may be changed at the time of yearly membership renewal.

The Idaho SA Coordinator is appointed by the President. A Chair and Vice-chair for each Section may also be appointed. By understanding the responsibilities of the SA Coordinator, individual members will come to know how important they are to the workings of the SA and how the SA can benefit them. Duties and responsibilities of the State SA Coordinator include:

- a. Coordinates activities of the SA on the State level as defined by the State Society.
- b. Encourages the formation of SA Sections at the State and local levels.
- c. Coordinates activities at the State and local levels to provide effective interrelationships.

This past year, IDSCLS leadership began the HUGE task of gathering information on SA membership within the state organization. As members, each of us can help by supplying information on section membership and email contact information, if applicable. Let us utilize available technology to strengthen the IDSCLS as we work with one another and get to know others within our areas of expertise. Broaden our horizons by exposing ourselves to something new. Don't re-invent the wheel; learn from someone who passed through those ruts before. As we allow ourselves to be connected through the Scientific Assembly, we will have the comfort of knowing there is someone at the end of the phone line or computer screen who is willing to help. We may be stuck when writing a procedure or need an opinion when changing specimen delivery methods. Nothing is too small or too great to be addressed by IDSCLS members throughout the state.

Put your foot in your hand and contact IDSCLS leadership with your email address and Scientific Assembly preference. Please contact Christy Posio (2003-04 IDSCLS President) chrizteaze@aol.com or Barb Frankovich (2003-04 SA Coordinator) barbmtascp@msn.com with this information. Let us look forward to a great adventure together as we participate in Scientific Assembly.

Highlights from the IMSS Convention



Susan, Kelia and Debbie
At the Bar J Ranch



Susan, Kelia, and Christy
sign up to help Amy with the
IDSCLS Spring Convention



Celcia Wilson registration
At the Bar J Ranch



Christy, Terri, Sandi and Barbara
IDSCLS Board meeting.

National Laboratory Week is coming up.

It is April 18-24. It's never too early to start planning.

IDSCLS Spring Convention is April 15-17
Red Lion Hotel Twin Falls Idaho

For more information check out the following site.

<http://www.ascls.net>
amylarsenfullmer@peoplepc.com

Moving???

Be sure to let us know!

Name _____

Old Address _____

New Address _____

Home
Phone _____

Work Phone _____

E-mail _____

Send to:
Brenda Miranda
6200 S. Peppertree Ave.
Boise, ID 83716

Email bshariki@msn.com



IDSCLS FOCUS is published by the Idaho Society for Clinical Laboratory Science. Rights to edit for content and length of materials are retained by IDSCLS. Send all inquiries to the Editor to the address below or to cakevens@ihc.com.

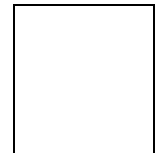
Calendar of Events

February 26-28, 2004	CLEC Milwaukee, WI
April 15-17 2004	IDSCLS spring convention Red Lion Hotel Twin Falls
July 27-31, 2004	ASCLS Annual Meeting Los Angeles, CA
September 15-18 2004	IMSS Meeting Jackson

Websites of interest

WWW.IDSCLS.NET WWW.ASCLS.ORG
WWW.ISU.EDU/CLS www.microbes.info/
www.ama-assn.org/ www.microbiol.org/
WWW.AAFP.ORG/PT/

Kent Evensen-IDSCLS Editor
85 W. 300 N.
Rupert, ID 83550



ADDRESS CORRECTION REQUESTED